



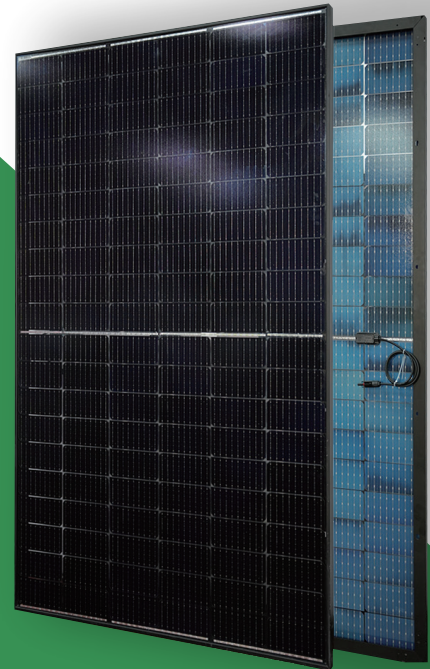
Huge-solar

Radiance Series

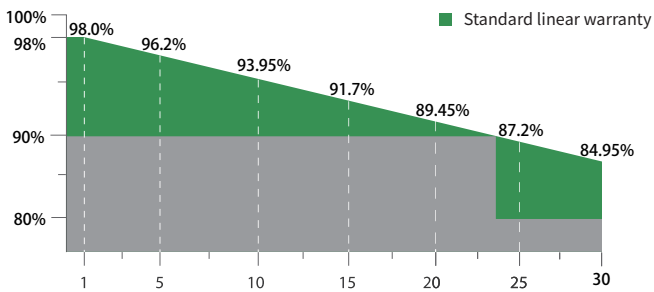
M166H660-DG-350-385W

350-385W Mono

Double glass and frame packaging to ensure module strength. will produce more energy than a mono facial module with the same nameplate power. Bifacial module can convert light that strikes both the front face and the back face of the module into electricity. Under the same conditions a bifacial module will produce more energy than a single-sided module with the same nameplate power.



Linear performance Warranty



Linear performance warranty



Product warranty

Comprehensive Certificates

CERTIFICATION

- IEC61215/IEC61730
- ISO9001:Quality Management System
- ISO14001:Environmental Management System
- ISO45001:Occupational Health and Safety Management System



QIDONG SHENYA INDUSTRY CO., LTD

TEL: +86 15250188350 E-mail: paul@huge-solar.com

ADD: No.249 GongYuan Road,Qidong Jiangsu China

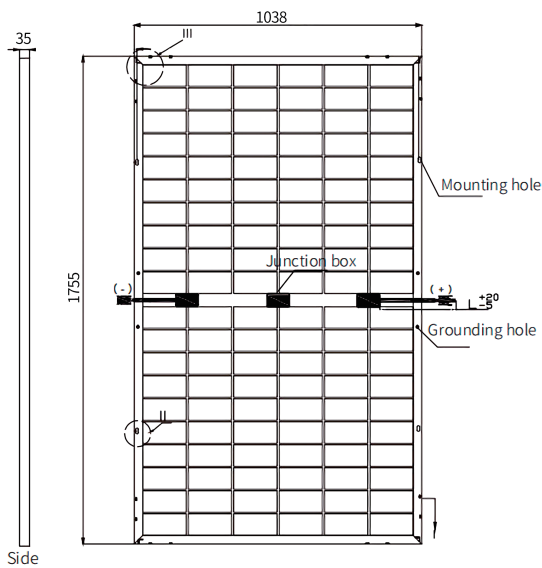
Electrical Specificatio																	
Module Type		M166H660-DG-350W		M166H660-DG-355W		M166H660-DG-360W		M166H660-DG-365W		M166H660-DG-370W		M166H660-DG-375W		M166H660-DG-380W		M166H660-DG-385W	
Test Standards		STC	NOCT	STC	NOCT	STC	NOCT	STC	NOCT	STC	NOCT	STC	NOCT	STC	NOCT	STC	NOCT
Maximum Power	Pmax(W)	350	258.5	355	262.6	360	266.7	365	270.8	370	274.2	375	277.5	380	280.9	385	284.3
Maximum Power Voltage	Vmp(V)	33.05	30.66	33.39	30.89	33.74	31.12	34.09	31.35	34.46	31.48	34.83	31.61	35.20	31.74	35.45	31.87
Maximum Power Current	Imp(A)	10.59	8.43	10.63	8.50	10.67	8.57	10.71	8.64	10.74	8.71	10.78	8.78	10.82	8.85	10.86	8.92
Open Circuit Voltage	Voc(V)	39.83	37.80	40.11	38.00	40.39	38.20	40.67	38.40	40.95	38.60	41.23	38.80	41.51	39.00	41.79	39.20
Short Circuit Current	Isc(A)	11.07	8.91	11.10	8.97	11.13	9.03	11.16	9.09	11.18	9.15	11.20	9.21	11.22	9.27	11.24	9.33
Module Efficiency	(%)	19.21		19.49		19.76		20.04		20.31		20.59		20.86		21.13	
Power Output Tolerance	(W)	0±5															
Tolerance During Power Test	(%)	±3															

"(STC)"irradiance 1000W/m², Module Temperature 25 C, Air Mass 1.5
 (NOCT)"irradiance 800W/m², Ambient Temperature 20 C, Wind Speed 1m/s"

Mechanical Data	
Number of Cells	120Cells(6×20)
Dimensions of Module L*W*H (mm)	1755×1038×35mm
Weight (kg)	23kg
Glass	Double-sided glass 2mm
Frame	anodized aluminium alloy
J-BOX	IP68, 3 diodes
Cable	4.0mm ² , 300mm or customized
Wind/Snow Load	2400Pa/5400Pa*
Connector	MC Compatible
Maximum power two-sided ratio	70±5%
*For more details please check the installation manual	

Temperature Ratings	
Nominal Operating Cell Temperature(NOCT)	44±2 C
Temperature Coefficient of Isc	+0.06%/C
Temperature Coefficient of Voc	-0.30%/C
Temperature Coefficient of Pmax	-0.39%/C
Maximum Ratings	
Operational Temperature	-40 - +85 C
Maximum System Voltage	1500V DC
Max Series Fuse Rating	20A
Packaging Configuration	
Module per box	31+31+5=67pieces
Module per 40'container	871pieces(35Frame)

ENGINEERING DRAWINGS



IV CURVES

